

Biggin Hill Primary School

Welcome: Headteacher and Designated Safeguarding Lead

Biggin Hill Primary School is a two form entry school set in beautiful grounds on the outskirts of the London Borough of Bromley. Our school site is situated on one level and benefits from lots of wonderful outdoor space! We are very proud to be part of the Inicio Education Trust, which is comprised of 4 secondary schools and 8 primary schools.

Our aim for all children who attend Biggin Hill Primary School is for them to be safe, happy, find a love of learning and for them to reach their full potential.

We take enormous pride in our school and believe we offer a unique and exciting provision for children to thrive and learn.

We are a fully inclusive school and pride ourselves on our approach to inclusion of all children, our work with children to promote good wellbeing and our extensive outreach work with families.

I feel privileged to be the Headteacher of this wonderful school and to lead the dedicated, hardworking and passionate staff team that we have here.

This online brochure and our website will provide an insight into the experiences we offer children at Biggin Hill Primary School and our range of facilities. Of course, this can only give a small flavour of our school. If you would like to arrange a tour of our school or you have any questions and would like to find out more information, please do not hesitate to contact us.

My very best wishes,

Kate Lawrence

Headteacher and Designated Safeguarding Lead

Welcome: Chair of Governors

I'd like to offer a warm welcome and hope that you enjoy learning more about the opportunities available to your child if you choose Biggin Hill Primary School.

Ours is a safe, happy and vibrant school where individuality is respected and nurtured. The strong, well-balanced curriculum is designed to support every child to grow in confidence, develop their love for learning and shape their aspirations for the future.

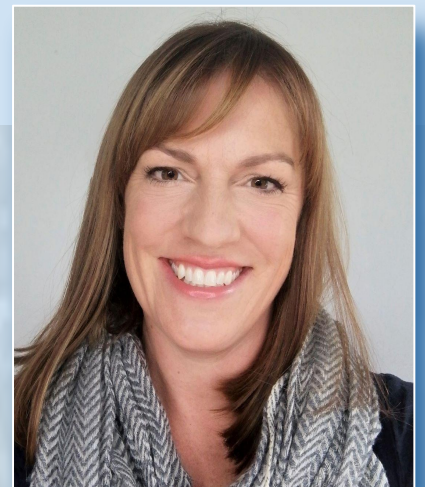
It is an honour to serve as the Chair of Governors at Biggin Hill Primary School. The Governing Body works closely with Mrs Lawrence and her fantastic staff team, ensuring that together, we remain focused on our strategic aims for continual progress in all areas. We offer support and challenge where appropriate and regularly seek out feedback from the children, which they happily share!

Biggin Hill Primary School prioritises working in partnership with parents and carers because it benefits children's education and wellbeing enormously. If you have any questions, please feel free to contact me or any members of the Governing Body via the school website.

Best wishes,

Laura Tully

Chair of the Governing Body



Pride in all that we do!

Our Whole Provision: A Summary

The children, their inclusion and the enrichment of their learning are very much at the heart of all that we do at Biggin Hill Primary School. We are exceptionally proud of our provision and are committed and excited to take our school on its journey towards becoming an 'outstanding' school.

Our Pre-School

We have our own fabulous pre-school where we offer a combination of morning, afternoon and all day sessions, five days a week (term time only) for children. Our pre-school offers continuous provision of engaging learning activities come rain or shine! Situated within our Key Stage 1 building, our pre-school has its own secure access and a dedicated safe and secure outdoor learning area and garden.

Our School

We are exceptionally proud to offer our continuous provision model for children in Reception and Year 1. Our Reception children enjoy a stimulating learning environment with a dedicated shared learning space, courtyard and outdoor learning area. They can choose to learn outside or inside and can self select from a wide range of exciting and engaging activities and resources. In Year 1, children learn in a similar way - selecting their own resources to apply and develop what they have learned with their teachers. The continuous provision model helps children to gain valuable skills and to develop independence and social interaction.



In Years 2-6, children enjoy a stimulating and creative curriculum, linked to real world learning. Our experienced teachers plan lessons which are engaging and memorable while developing pupils' knowledge, skills and understanding. We take a very creative approach to learning and often have curriculum-themed days, as well as utilising our outdoor environment to enhance hands-on-learning experiences for our pupils. In Years 4 and 6, children have the opportunity to take part in residential visits which provide them with new experiences, encourages independence and enriches the curriculum.

We have a playground for our Key Stage 1 children with apparatus and a castle, a Key Stage 2 playground for children with outside exercise equipment, a football pitch and a trim-trail. We also have a large, shared school field where the children enjoy school sports days and events. Our grounds also give us the opportunity to take the classroom outside - there really is so much space!

We have a fabulous sensory garden, learning hub, many dedicated spaces for small group teaching and learning, a bubble room (a space for children with sensory needs) a beautiful art gallery, a full hygiene room facility and so much more.

Celebrating the achievements of all children is important at our school. We have many initiatives to recognise children's successes in school - from awarding house points, praising individual work, 'Star of the Week', Ambassadors of 'The Biggin Hill Way', Special Recognition Awards and Headteacher Award assemblies. We also celebrate the success of our children's involvement with outside organisations in either class or celebration assemblies and through our newsletter.

Our before and after school club: BHPS Xtra

We offer a full wraparound care service. Our before and after school clubs (separately bookable and payable) are run by school staff with whom the children are familiar with. Often, before school, children can be found completing craft activities or playing games whilst interacting with one another or enjoying different board games in a relaxed environment. After school, children often spend time enjoying activities in our school grounds, using IT equipment, enjoying a range of practical games or developing their cooking skills. To cater for the needs of different families, we offer After School Club *Mini* which runs until 4.30pm, *Late* from 4.30pm until 6.00pm (perfect for those who also do an onsite extra curricular activity!) and *Xtra* which runs until 6pm.

Inclusion and Wellbeing

At Biggin Hill Primary School we pride ourselves on promoting inclusivity and continuously strive to provide the best provision we can for our children and families. We carefully consider the learning and wellbeing needs of all children individually, including those with SEND. We provide our teaching staff and Learning Support Assistants with high quality professional development to ensure that the additional needs of our children can be met in a mainstream setting. The environment at Biggin Hill Primary is developing constantly and is consciously adapted to meet the needs of our children. We strongly believe that by providing our children with an environment to suit their needs, they will be successful with us academically, socially and emotionally. In addition to dyslexia friendly classrooms and alternative workspaces we are proud to offer:



"Pupils thrive at this welcoming and friendly school" (Ofsted, April 2023)

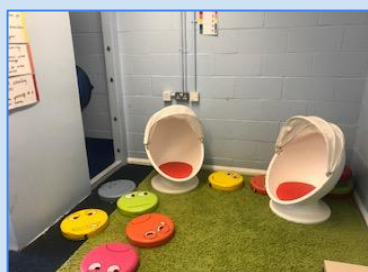


The Hub

The Hub is a hive of activity and a space integral to providing our children with additional support, including those who have the potential to reach beyond age expectations. The Hub provides a working environment with a variety of alternative seating areas, a range of resources to support children's learning, a set of Chromebooks and an area to take part in more physical interventions. The Hub is also home to our Aspire classroom which allows us to offer a fluid provision for our KS2 children who require a more personalised learning approach.

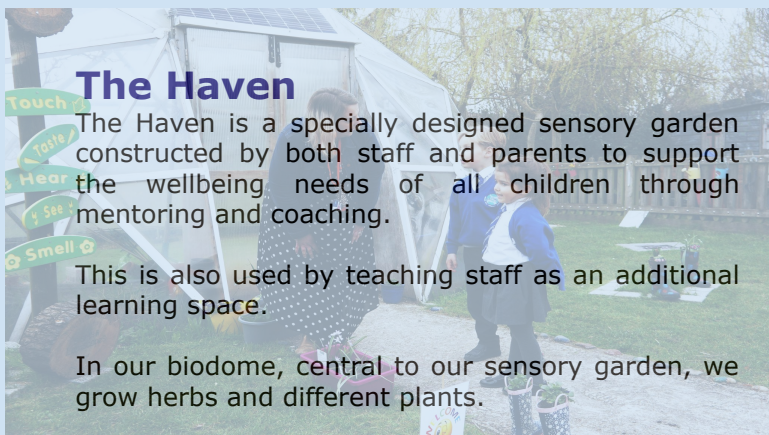
The Bubble Room

The Bubble Room is a sensory heightening environment for all children to access. The Bubble Room is a firm favourite amongst many of our children with sensory floor tiles, large bubble tubes, low lighting, beanbags and lego!



The Hangar & The Launchpad

The Hangar is a provision carefully adapted to meet the needs of our children with a diagnosis of Autism or those who have social communication difficulties. The room is especially designed to be low sensory to provide a calming alternative to being in the classroom. This includes individual booths, a calming area, trained adults specialising in ASD plus carefully selected resources to support our children. The Launchpad is an adapted classroom and outdoor learning space; home to some of our EYFS & KS1 children, who find mainstream learning overwhelming. The Launchpad offers personalised curriculums to the children who access this learning space.



The Haven

The Haven is a specially designed sensory garden constructed by both staff and parents to support the wellbeing needs of all children through mentoring and coaching.

This is also used by teaching staff as an additional learning space.

In our biodome, central to our sensory garden, we grow herbs and different plants.



Wellbeing

At Biggin Hill Primary School we understand the importance of mental health awareness and encourage all children and families to speak out if they feel unsure, unhappy or in need of support. We recognise that positive wellbeing is key to a child's development; emotionally, physically and educationally.

We celebrate school life and the achievements of all our children regardless of their abilities and educational needs in a number of ways. We use assemblies to educate the children and provide them with a diverse and enriched curriculum. This enables the children to build resilience and acceptance towards others and of themselves and ensures that every child feels appreciated, cared for and most importantly valued.

Through extra provisions such as mentoring support, a sensory room and garden, we strive to create spaces for children to work through any difficulties they may be experiencing with trusted members of the school team. These opportunities teach the children that speaking out and raising their own mental health needs can have a positive effect on not only themselves but their families and the school community as a whole.

Every member of staff at Biggin Hill Primary School promotes mental health awareness and monitors the children closely to identify any child who may need support. Procedures are in place for any concerns to be followed up quickly ensuring that the appropriate support is provided for individuals.



Family Liaison and Wellbeing

We offer dedicated family liaison and wellbeing support through our Family Liaison and Mental Health Lead - from time-to-time, we may all need a little help. We take pride in our excellent relationships with our families. Our family liaison can support you, your child and family, if required, with:

- Support, guidance and signposting for children and their families to promote good wellbeing
- Offering 'one-to-one' wellbeing support
- Mentoring for children in school.

We take pride in all that we do!

*"Leaders have high expectations for all pupils"
(Ofsted, April 2023)*

Our Curriculum

Our Approach



Here at Biggin Hill Primary School, we share a vision for delivering an immersive and engaging curriculum for all of our children. Our curriculum is broad and balanced, ensuring our pupils are given time to develop core knowledge and skills as well as a strong understanding and skills base in the foundation subjects. We have developed a bespoke curriculum which provides rich and stimulating lessons for our children and allows them to develop skills and deepen knowledge and understanding through meaningful and memorable lessons. As children progress through the school, these skills are built on and further developed and valuable links are made between the topics that are covered, ensuring a strong and extensive knowledge base for all of our children. We are proud to be a Google school and have a full Chromebook Trolley and a class set of iPads which have been used to enhance the learning in the classroom and provide each child with digital access to learning.

English

We believe that fluency in the English language is an essential foundation for success in all subjects and our teachers develop pupils' spoken language, reading, writing and vocabulary as integral aspects of the teaching of every subject. We aim to develop in pupils a love of books and literature that will not only support their learning across the curriculum but also enrich their lives. In each unit of work completed, children will use high quality, stimulating texts to form the basis of their learning. From early years, we teach children the craft of writing in order to develop their confidence and skills, not only for now but in their future lives. These skills are built on and consolidated as children progress through each year group, helping them to become confident and creative writers. We strive to foster in pupils the confidence, desire and ability to express their views and opinions both orally and in writing so they become effective communicators. We want pupils to value and celebrate diversity in culture and language through books.



Mathematics

We want our children to enjoy mathematics and thrive on challenge. We ensure they have opportunities to embed core knowledge, such as number facts and times tables, and progressively develop calculation strategies and methods so that they can solve problems and puzzles that are relevant to them. We aim to develop the children's ability to articulate their thinking, become more resilient and persevere through challenge, leading to a true sense of pride and achievement.



Science



We use an enquiry based approach to teach science. Our children have the opportunity to gain a thorough understanding of the National Curriculum content while developing key scientific skills, ensuring that as they progress through each year group they are being equipped with the knowledge, understanding and skills needed to inform their future learning. Vocabulary development forms a huge part of our curriculum and we ensure time is spent learning the key scientific vocabulary needed for our children to articulate their understanding in discussions and in their written work. We want our children to develop an understanding of the important role science plays in the working world so we explore roles played by scientists in the world around them, helping to set high aspirations for all. English and maths are woven throughout our science curriculum; this ensures our pupils have valuable opportunities to apply key English and maths skills while demonstrating their scientific understanding.

Our Wider Curriculum

A visit to our classrooms will be an unforgettable one: step back in time to Ancient Egypt with Year 5 and learn about mummification by mummifying a fish; find out what the Viking diet was in Year 6 by dissecting Viking poo; or create a volcano with Year 3 and watch as it erupts before your very eyes!



We aim to make our lessons cross-curricular wherever possible: Art, D.T, Music and P.E are used within topics to broaden the learning experience for children. Join Year 5 to see what they have learnt about the rainforest when they create their own ring-tailed lemur enclosure; pop in to visit Year 2 to see their Great Fire of London artwork; or come and see Year 6's sewing skills as they make their own Underground Railroad blanket. Our local area and extensive school grounds are regularly used by teachers to enhance learning for all children.

Forest School



Our established Forest School is taught and led by our experienced and qualified Forest School Lead. Forest School sessions allow children to engage in hands-on experiences, develop self-esteem and confidence, enjoy our natural environment and develop a love for the great outdoors.

Children enjoy building shelters, carving, building campfires and learning to safely cook over an open fire in Forest School - ensuring it is an unforgettable learning experience for all! Our Forest School curriculum also makes valuable links with our science curriculum so our pupils can develop their skills and deepen their knowledge and understanding further.

"Pupils enjoy school and are well supported both personally and academically. Leaders have high expectations for all pupils. Beginning in early years, teachers think carefully about each pupil's starting point and help them succeed." (Ofsted, April 2023)

Enrichment

Buzz Days

Our teachers plan innovative Buzz Days in each topic - these Buzz Days are the hook for new learning or bring together the skills and knowledge that children have developed, at the end of a topic. Our children love taking part in Buzz Days and always look forward to them in each topic! Join Year 2 as they recreate the houses on Pudding Lane and watch as the Great Fire of London is recreated on the playground. Learn about the life of a Roman in Year 4 by immersing yourself in everyday Roman activities like making a mosaic and playing games. Enjoy sampling food from Greece with Year 3 as they find out about life in Mediterranean countries.

Trips and Visits

We use trips and visits to enrich our pupils' learning in the wider curriculum to provide them with a cultural and diverse experience and widen their horizons. Each year, Year 4 visit Lullingstone Country Park to apply their learning about river features in a real life context. Our Year 1's are always delighted when their grandparents pop in for an afternoon tea during which they tell stories about their lives to help the children learn about history within living memory. Our children thoroughly enjoy stepping back in time when they become Romans, Greeks or Egyptians for the Day as they find out what everyday life was like in each of these Ancient Civilizations through role play.



We run two fabulous residential trips; one in Year 4 and one in Year 6. Year 4 children experience wild camping for 2 nights at Bushcraft and Year 6 children enjoy a trip to the Isle of Wight, Devon or Norfolk.

As well as this, we offer our children the opportunity to take part in special days which provide them with the opportunity to develop their experiences further. Children across the school found out all about the world of work during 'Careers and Aspirations Day' where we welcomed parents, carers and members of the community to inspire our children by sharing their professions.

Behaviour



Behaviour at Biggin Hill Primary School is excellent and we work hard with children to ensure they develop an understanding of the importance of good behaviour for learning. We aim to create an environment which encourages and reinforces positive behaviour, encouraging consistency of response to both positive and negative behaviours. We aim to develop self-esteem through celebrating success, encouraging self-discipline and nurturing positive relationships. Our expectations of behaviour are high

and we are consistent in our approach. Our most up to date Behaviour Policy can be viewed on our website.

The Biggin Hill Way

Our school ethos is built around our five core values which were developed by both the staff and children at the school. Our values: **Positivity**, **Respect**, **Inclusivity**, **Discovery** and **Endeavour** reflect the school's desire to take **PRIDE** in everything we do. Following these values is central to what we describe as the 'Biggin Hill Way'. Children have the opportunity to work towards becoming ambassadors of the 'Biggin Hill Way' throughout their time with us.

Community

The views of all of our stakeholders are important to us and we regularly seek the views of children, parents and carers, staff, governors and the wider community. The views of our children are shared via our weekly Parent Newsletter.

We support our local community and take part in events alongside other organisations and charities. Our choir regularly performs at the O2 as part of 'The Young Voices' concert and our numerous sports teams represent the school in tournaments across the borough.

The 'Friends of Biggin Hill' organise some fantastic events open to all members of the school community including our traditional summer fair, Christmas fair and colour run!

We also hold Community Coffee Mornings at the school which provides a relaxed space where parents and carers have the opportunity to meet one another and forge new friendships. The Friends of BHPS also attend our coffee morning to promote their work and sell pre-loved school uniform.

We have a 'Tea and Tots' baby and toddler group that meet at the school once a week. This is a great way to offer something extra for our families with young siblings, as well as providing us with an opportunity to involve and welcome new faces to our school community.

We also hire our facilities to external clubs that provide children in the local area with a range of extracurricular activities. These clubs help to develop individual talents, interests and wellbeing in the wider community.

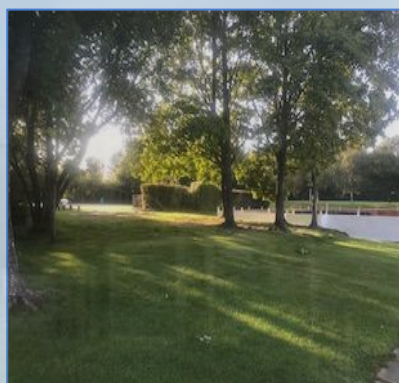
Quality

We are proud to have achieved the Quality Mark for History and Geography. The Quality Mark is awarded to schools as recognition for excellence in teaching and learning, so we are incredibly proud of these accreditations in our wider curriculum subjects! Over the past three years, we have been awarded the gold award for the Primary History Quality Mark (PHQM), the silver award for the Primary Geography Quality Mark (PGQM). We are also very proud to have gained the gold award for the Transport for London STARS. Again, this shows our commitment to sustainability.



Let your journey begin!

To find out more about our school or to arrange a tour, please visit our website www.bigginhillprimary.com or contact our school office team at: 01959 575846 or admin@bigginhillps.com



We take pride in all that we do!



*Biggin Hill Primary School
Old Tye Avenue
Biggin Hill
Kent
TN16 3LY*

Telephone: 01959 575846

Email: admin@bigginhillps.com